

# ABSORGEL - Pouch - for Container Shipments

**Effective – lowers the relative humidity (RH)**

- protects against moisture damage
- prevents condensation
- environmentally friendly



## Easy to install

1. remove from sealed package
2. Immediately active!



**ABSORGEL**<sup>®</sup>  
No liquid water

ABSORBAG  
ABSORPOLE  
ABSORTOP

ABSORGE<sup>®</sup>L -Pouch- is a simple and safe product in the form of a gel pad. It is based on the proven ability of Calcium Chloride to aggressively remove moisture from the air. The ABSORGE<sup>®</sup>L will start to activate once removed from its sealed package.

Active agent: Calcium Chloride (CaCl<sub>2</sub>) Cas-Nr. 10043-52-4. Adhesive agent: modified starch.  
The Calcium Chloride is nontoxic, non flammable and environmentally friendly.

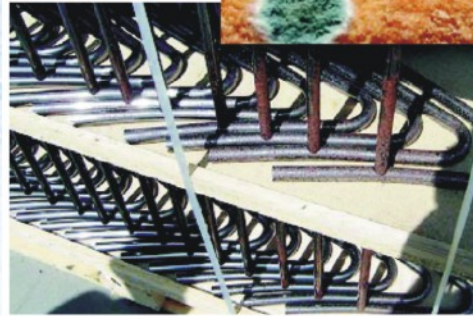
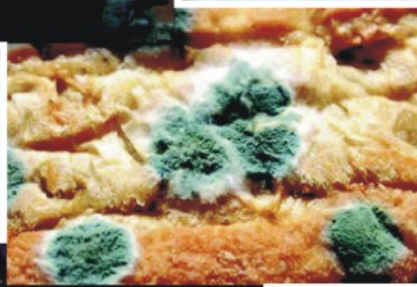
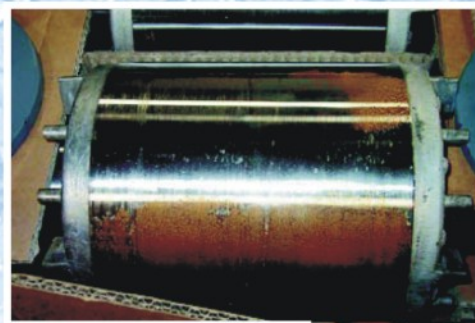
## Loads with minimal available free space

### suitable for:

- Fresh and canned food products, cased or boxed, trays
- Steel, machinery
- Furniture, paper, leather, timber products etc

### Specification:

Size	: L = 22 cm W = 15 cm D = 1 cm
Net weight	: 125 Grams
Temperature	: - 20°C to + 80°C
Absorbing medium	: Calcium Chloride (CaCl <sub>2</sub> )
Adhesive agent	: Modified starch



...for Containers

